

FEATURES:

- Compact detector switch with smooth switching action
- SMT type is available for tape & reel package.

MATERIAL:

- Cover(1): LCP High-temp Thermoplastic
Color: Black
- Cover(2): LCP High-temp Thermoplastic.
Color: Black
- Stem: LCP High-Temp Thermoplastic
Color: Black
- Base: PA9T High-Temp Thermoplastic
Color: Black
- Contact: Stainless steel with silver cladding.
- Terminal: Brass, Silver plating.

SPECIFICATION

MECHANICAL

- Operation Force: 40 gf max
- Stork: 3.90mm max. (Stem Height 5.30mm)
2.60mm max. (Stem Height 3.80mm)
- Operation Temperature Range: -10°C to +60°C
- Storage Temperature Range: -20°C to +70°C
- Vibration Test: MIL-STFD-202F METHOD 201A.
Frequency: 10-55-10Hz/1 minute
Directions: X,Y,Z, three mutually perpendicular directions.
Time: 2 hours each direction.
High reliability.
- Shock Test: MIL-STD-202F METHOD 213B
CONDITION A.
Gravity: 50G (peak value), 11 msec
Direction and times: 6 sides and 3 times in each direction.
High reliability.

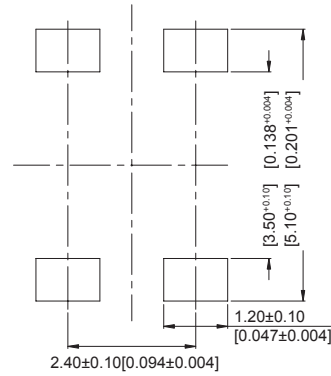
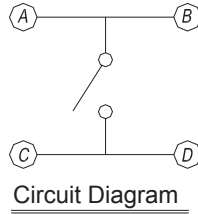
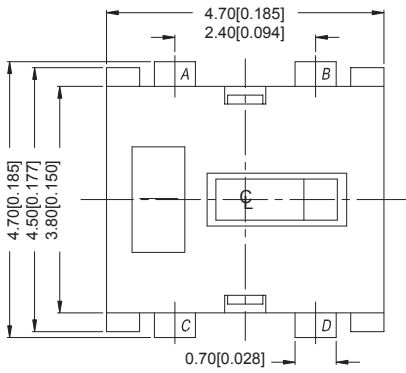
ELECTRICAL

- Electrical Life: 100 000 cycles
- Rating: 1mA, 5VDC
- Contact Resistance: 1Ω max.
- Insulation Resistance: 100MΩ min. 100V DC
- Dielectric Strength: 100VAC/1 minute.
- Rate of Operation: 20~25 operation per minute.

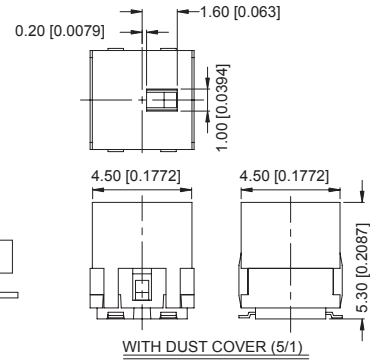
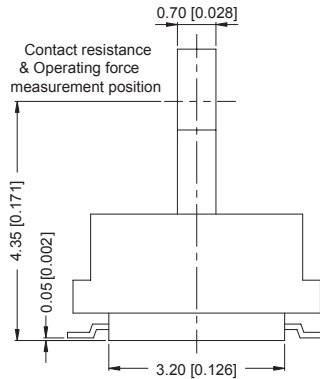
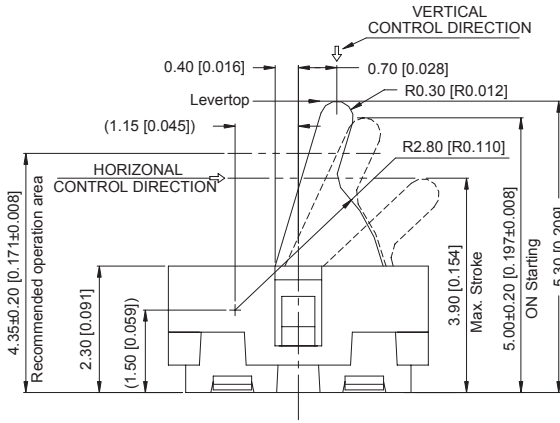
Packaging:

| Part Number | Number per Reel |
|---------------|-----------------|
| SVADS-1-T/R | 900 |
| SVADS-2C-T/R | 900 |
| SVADS-2PC-T/R | 900 |
| SVADS-2-T/R | 1200 |
| SVADS-2P-T/R | 1200 |

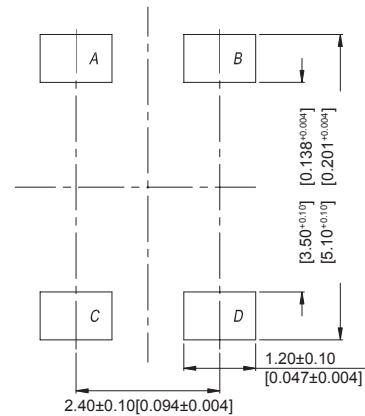
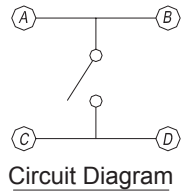
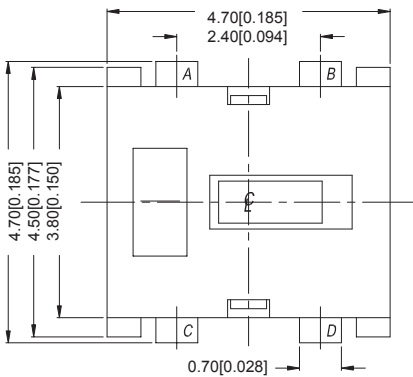
SVADS-1



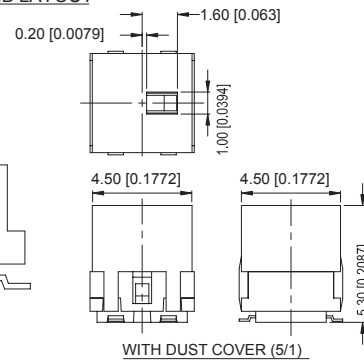
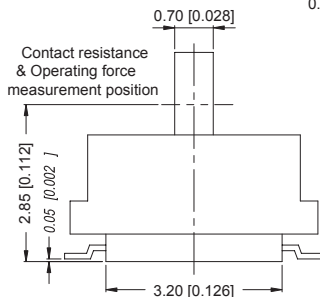
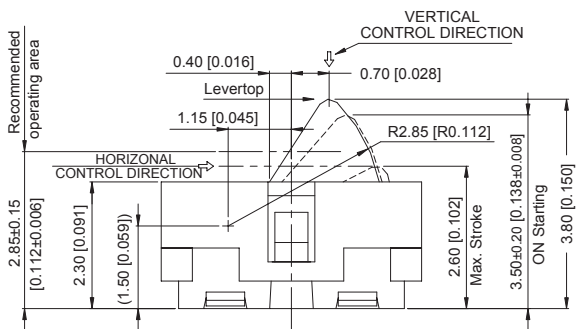
P.C.B Layout



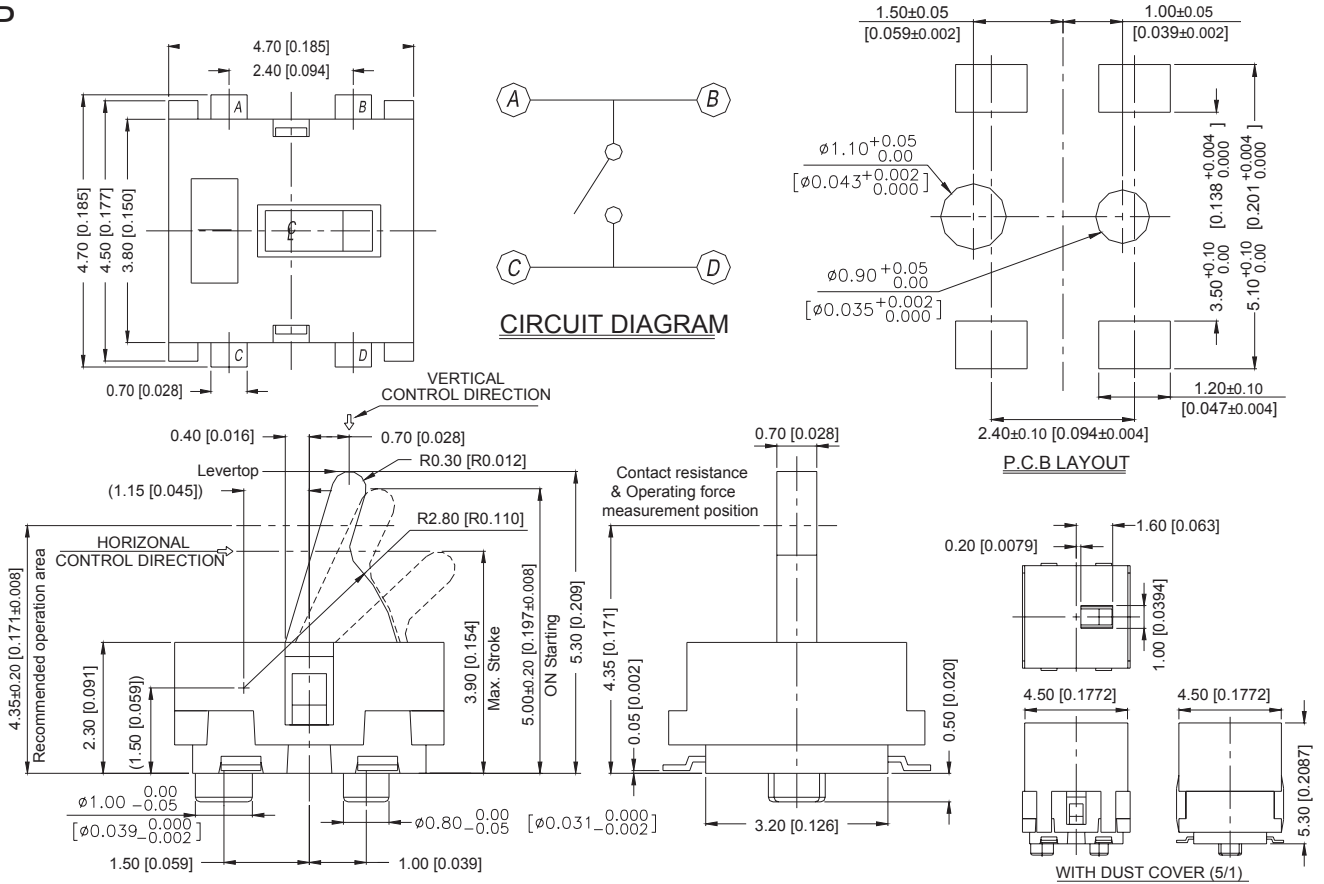
SVADS-2



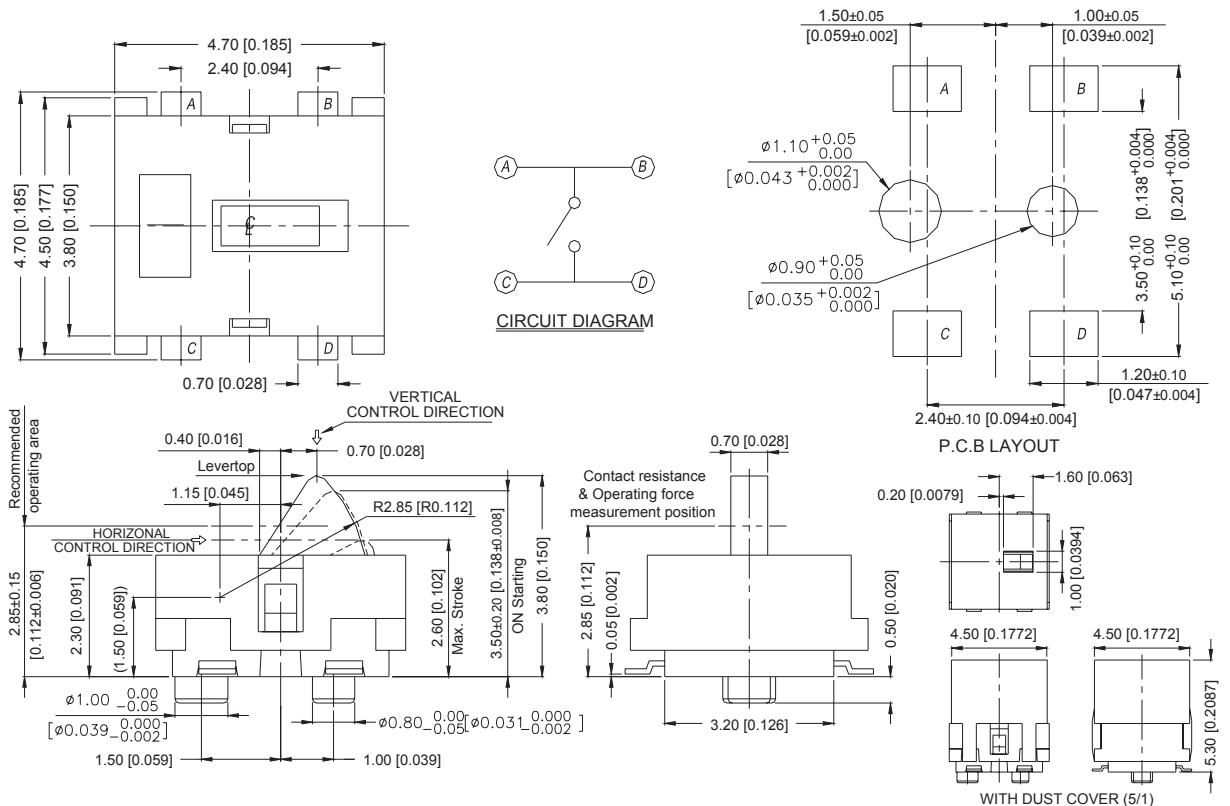
P.C.B LAYOUT



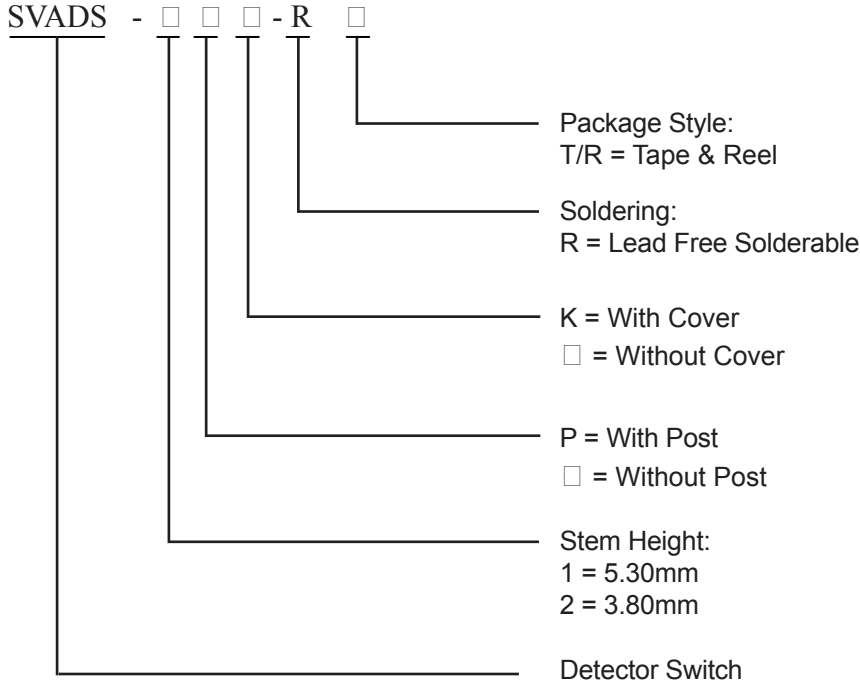
SVADS-1P



SVADS-2P



HOW TO ORDER:

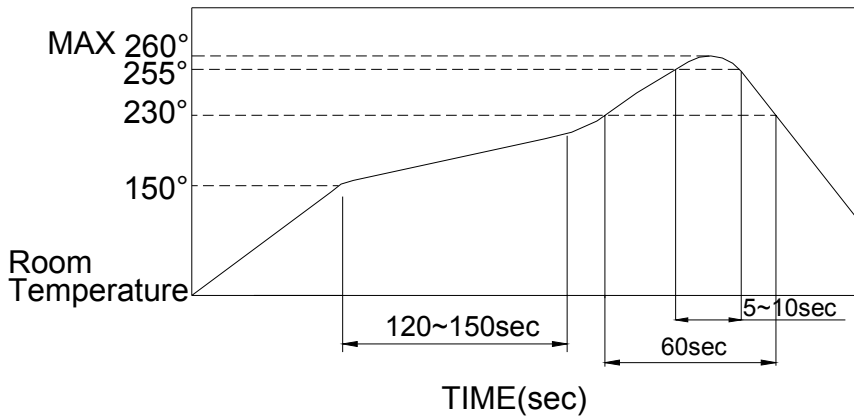


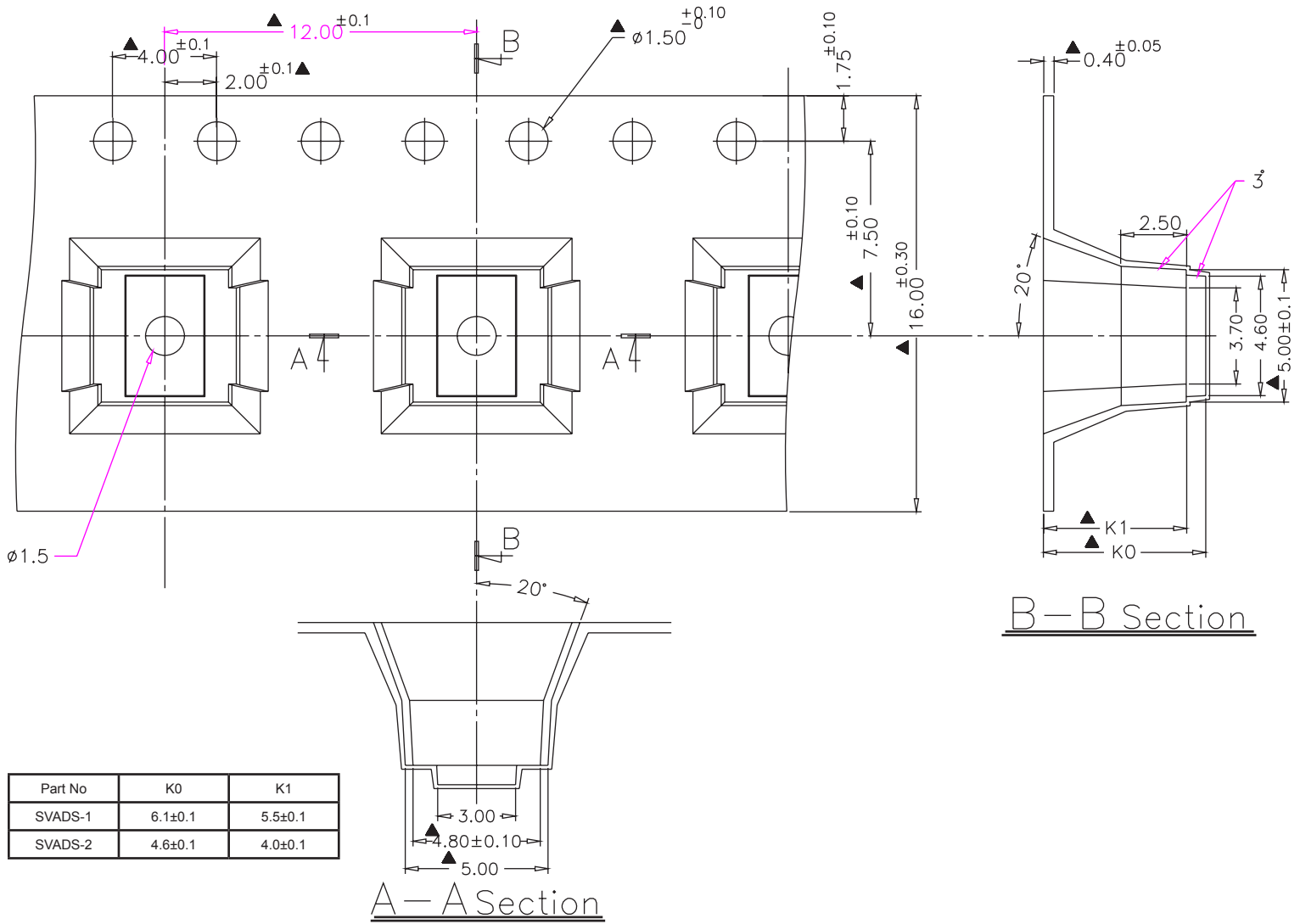
Soldering Process

▲ Hand Soldering : Use a soldering iron of 30 watts, controlled at 350°C approximately Max 5 seconds while applying.

▲ Reflow Soldering : When applying reflow soldering, the peak temperature of the reflow oven should be set at 260°C max.

Temperature Profile:





B-B Section

A-A Section

| Part No | K0 | K1 |
|---------|---------------|---------------|
| SVADS-1 | 6.1 ± 0.1 | 5.5 ± 0.1 |
| SVADS-2 | 4.6 ± 0.1 | 4.0 ± 0.1 |